

LONE TREE FARM

March 29, 2026 Hunter Pace



COURSE MAPS

Also view from your mobile phone on our website.

Hunter Pace Series Sponsored by:



DON DEFRANCO
TOWN & COUNTRY GROUP

DRE 01317125

COMPASS

REAL ESTATE

DONDEFRANCO.COM



23806 Yosemite Blvd., Waterford, CA 95386, lone_tree_farm@icloud.com

Visit www.lonetreefarm.net after the event for results



www.auburnlabs.com 877.661.3505

Makers of:



MODESTO IRRIGATION DISTRICT



209-526-7337

WWW.MID.ORG



Modesto Irrigation District has various programs that can help you unplug to conserve energy and plug-in to sustainability.

The power is in your hands.

TAKE ADVANTAGE OF OUR PROGRAMS



Rebates



Financial Assistance Programs



Energy Conservation



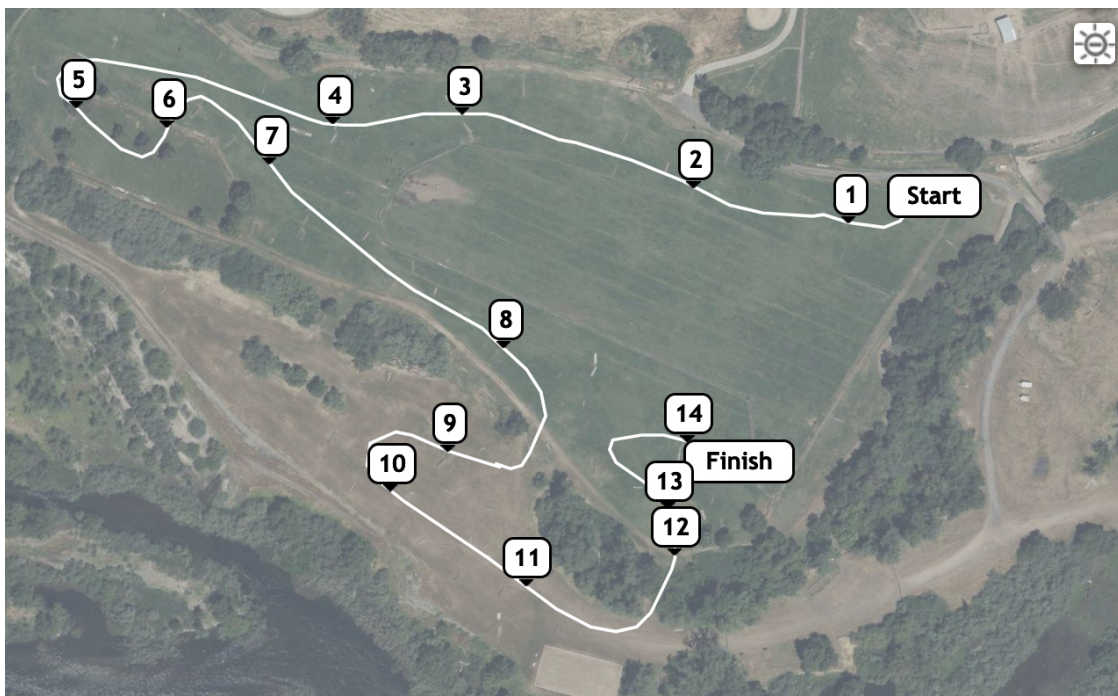
CLASS 1A & 1B – Warm Up – No jumps/Trot around fenced area - 200 m/m

CLASS 2A & 2 B Grasshopper – Red Markers – 250 m/m



- ① Log
- ② Log
- ③ Log
- ④ Log
- ⑤ Log
- ⑥ Log
- ⑦ Log out
- ⑧ Stack
- ⑨ Planter
- ⑩ Green & White Coop

CLASS 3A & 3B - Starter – Blue Markers – 300 m/m



- ① Log
- ② Log
- ③ Stack
- ④ Grey Cabin
- ⑤ Log in
- ⑥ Pipes Out
- ⑦ Green Rolltop
- ⑧ Planter or Rolltop
- ⑨ Red Barn
- ⑩ Stone henge
- ⑪ Green Stairs
- ⑫ Pond (optional)
- ⑬ Red Coop
- ⑭ Green Rolltop

Thank you to our 2026 Gold, Silver & Bronze Sponsors



WATERFORD FARM SUPPLY, INC.



120 F Street, Waterford, CA 95386 (209) 874-2391



Sweet River Equine Clinic, Inc.

200 Weyer Rd, Modesto, CA 95357

www.sweetriverequineclinic.com

Sponsors of Lone Tree Farm's Water Complex

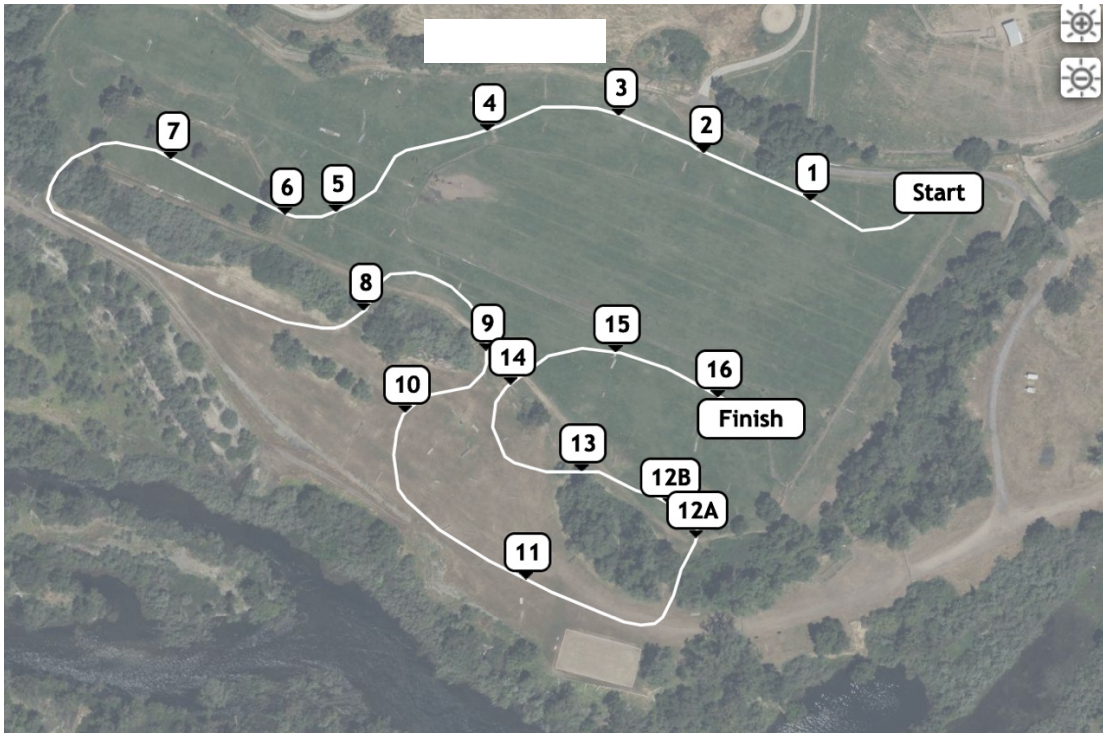
(209) 524-9191

CLASS 4A & 4B - Beginner Novice – Yellow Markers – 325 m/m



- 1 Log
- 2 Planter
- 3 Stairs
- 4 Table
- 5 Hanging Log
- 6 Table
- 7 Gully Stack
- 8 Castle
- 9 Green Table
- 10 Craggle Log
- 11 Barn
- 12 Pond
- 13 Cabin
- 14 Stairs

CLASS 5 - Novice – White Markers – 350 m/m



- 1 Log
- 2 Planter
- 3 Log
- 4 Fan
- 5 Triple Bar
- 6 Ditch
- 7 Brush
- 8 Upbank
- 9 Punches Town Drop
- 10 Table
- 11 Red Coop
- 12A Pond In
- 12B Pond Out
- 13 Tree Skinny
- 14 Upbank
- 15 Blue Table
- 16 Brown Rolltop

Thank You Bronze & In-Kind Sponsors:

OAKDALE FEED AND SEED
Oakdale, CA (209) 847-0307



*The Pristine
Pony
Blanket Wash
Service*

MELISSA GROOM
(209) 581-2938



STATE LINE TACK®
We make riding affordable.



dansko



**STEVE MEDLEN'S
HOUSE
OF BEEF**

NORTH 3RD AVENUE., OAKDALE, CA



Steve's
**CHEVROLET
BUICK
OAKDALE**



**SELECT
the best**



**Hope's Chance
Horse Sanctuary**

**PET
PORTRAITS**
by Elaine Scott



APE^{Pro}

**Melvin T.
WHEELER
& SONS**
Since 1969
Custom Hay Services, Trucking, & Feed Store



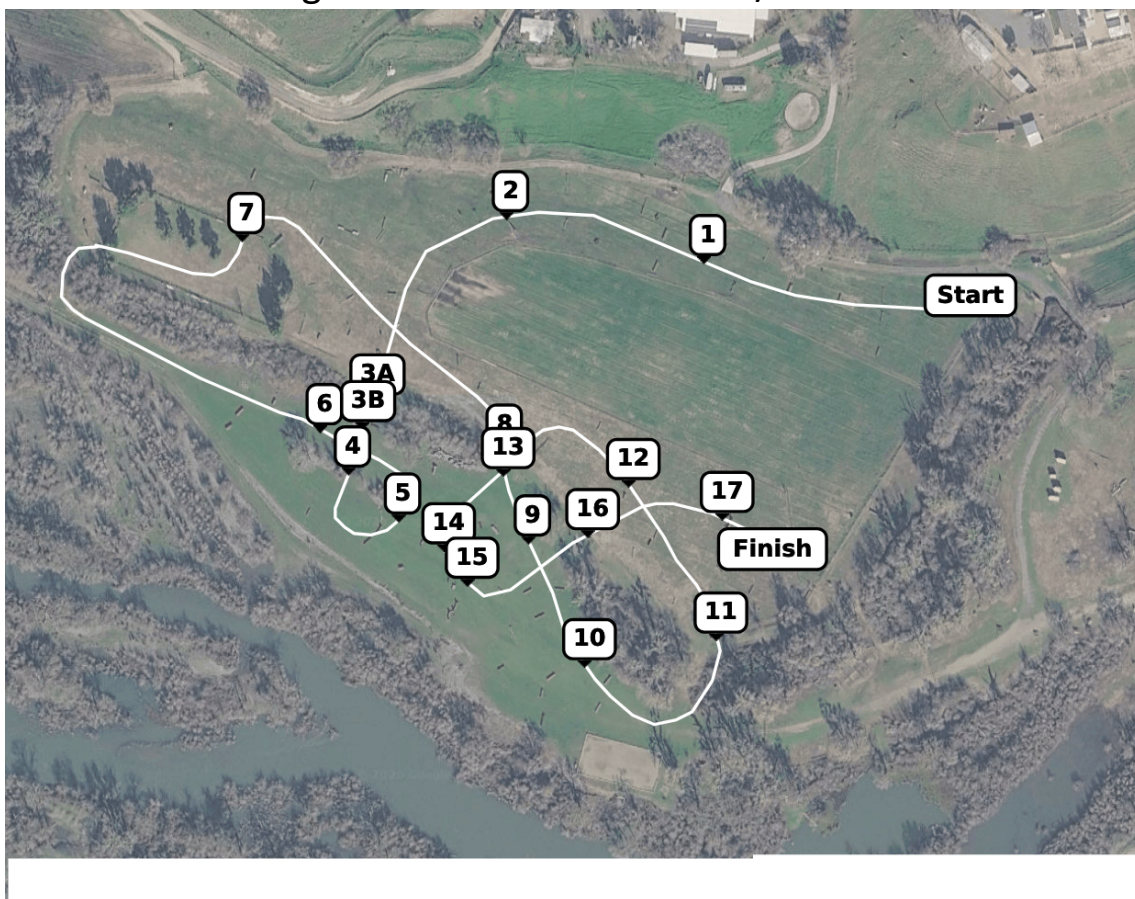
**JM
Horses**

Julie Mattox
Oakdale, CA
209-988-1800



Special Thanks to
Christine Amber
Bronze Sponsor

CLASS 6 - Training – Black Markers – 400 m/m



- 1 Red and green table
- 2 Fan
- 3A Sunken Road
- 3B Sunken Road
- 4 Cylinder
- 5 Gate
- 6 Green Table
- 7 Fence line Coop
- 8 Punches Town Drop
- 9 Skinny Log
- 10 Coop
- 11 Pond
- 12 Cylinder
- 13 Down Bank
- 14 Rolltop
- 15 Stone Henge
- 16 Hillside Log Up
- 17 Brown Rolltop

THANK YOU **DAVE WILSON NURSERY!**

2026 CROSS-COUNTRY LIFETIME JUMP SPONSOR!



www.davewilson.com

Ride times are posted separately. Visit: lonetreefarm.net

Please help support our wonderful sponsors who make these events possible!

Gary's Rent-A-Car

21311 Bloss Avenue

Hillmar, CA

209-667-2840

Join us for other 2026 Lone Tree Farm Events:

Additional Hunter Pace Dates: **May 3rd, July 12th & October 25th**

Cross-Country with Connie Arthur: **June 6th & 7th**

Adult Camp: **September 11-13th**

Equine Sports, Trail Trial: **October 3rd & 4th**

PLEASE ABIDE BY ALL LONE TREE FARM RULES

Everyone **MUST** sign a
LONE TREE FARM
RELEASE OF LIABILITY
→



NO Jumping without a trainer. NO horses near the river!
NO Dogs off leash! NO Campfires! DO not leave hoses under pressure
DO NOT park on the road or block the road or gates at any time
DO NOT allow your horse to drink from the farm's water troughs!
PLEASE Use own bucket for water/feed.
DO NOT tie your horse to fences, pipe pens or gates!