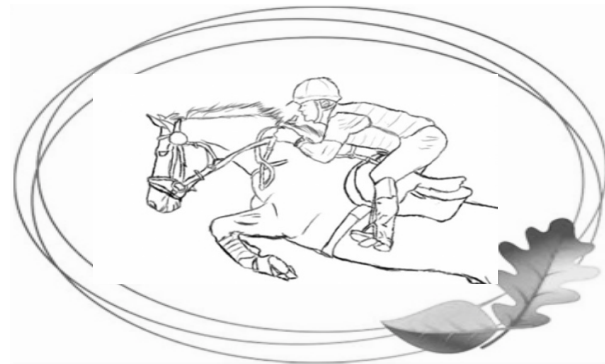


LONE TREE FARM

April 27th, 2025 Hunter Pace



COURSE MAPS

Also view from your mobile phone on our website.

Hunter Pace Series Sponsored by:



DON DEFRANCO
TOWN & COUNTRY GROUP

DRE 01317125

COMPASS

REAL ESTATE
DONDEFRANCO.COM



23806 Yosemite Blvd., Waterford, CA 95386, lone_tree_farm@icloud.com

Visit www.lonetreefarm.net after the event for results



www.auburnlabs.com 877.661.3505

Makers of:



MODESTO IRRIGATION DISTRICT



209-526-7337

WWW.MID.ORG



Modesto Irrigation District has various programs that can help you unplug to conserve energy and plug-in to sustainability.

**The power
is in your hands.**

TAKE ADVANTAGE OF OUR PROGRAMS



Rebates



Financial
Assistance
Programs



Energy
Conservation



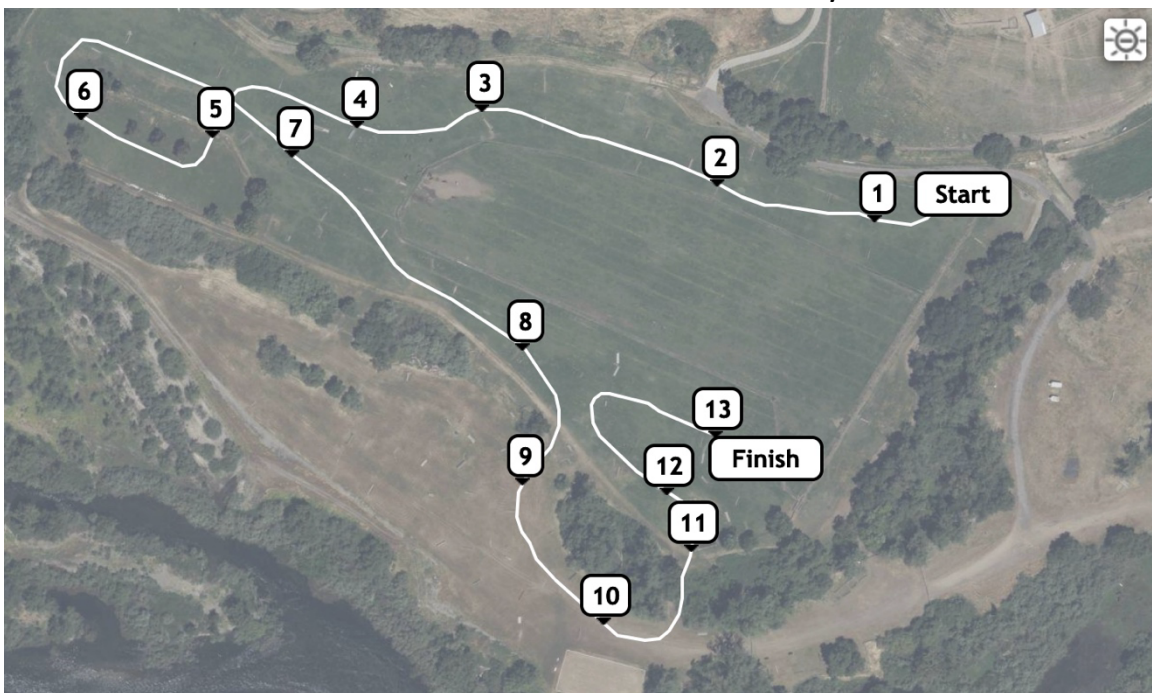
CLASS 1A & 1B – Warm Up – No jumps/Trot around fenced area - 200 m/m

CLASS 2A & 2 B Grasshopper – Red Markers – 250 m/m



- ① Log
- ② Log
- ③ Log
- ④ Log
- ⑤ Log
- ⑥ Log
- ⑦ Log out
- ⑧ Stack
- ⑨ Planter
- ⑩ Green & White Coop

CLASS 3A & 3B - Starter – Blue Markers – 300 m/m



- ① Log
- ② Log
- ③ Stack
- ④ Grey Cabin
- ⑤ Pipes in
- ⑥ Log out
- ⑦ Green Rolltop
- ⑧ Wood Rolltop
- ⑨ Red Barn
- ⑩ Stairs
- ⑪ Pond (optional)
- ⑫ Red Coop
- ⑬ Green Rolltop

Thank you to our 2025 Gold, Silver & Bronze Sponsors



WATERFORD FARM SUPPLY, INC.



120 F Street, Waterford, CA 95386 (209) 874-2391



Sweet River Equine Clinic, Inc.

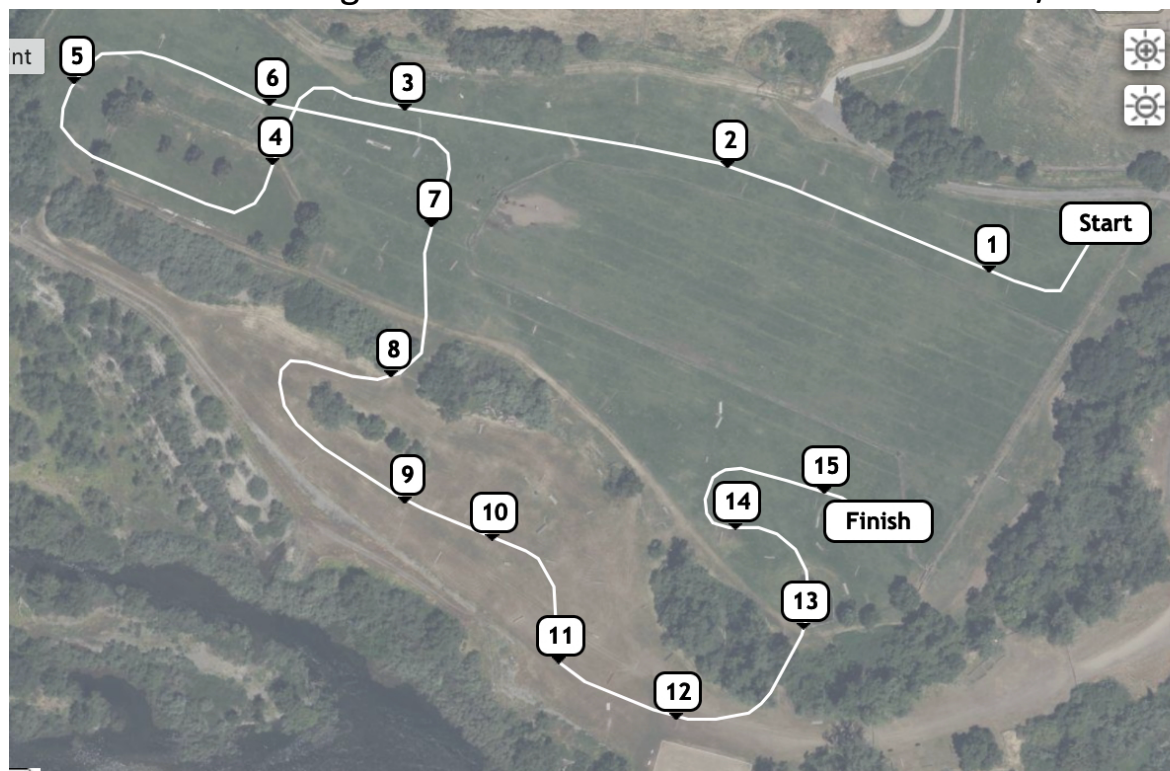
200 Weyer Rd, Modesto, CA 95357

www.sweetriverequineclinic.com

Sponsors of Lone Tree Farm's Water Complex

(209) 524-9191

CLASS 4A & 4B - Beginner Novice – Yellow Markers – 325 m/m



- 1 Log
- 2 Planter
- 3 Stairs
- 4 Gate In
- 5 Hanging Log
- 6 Red and Green
- 7 Palm Log
- 8 Gully Stack
- 9 Castle
- 10 Green Table
- 11 Craggle Log
- 12 Barn
- 13 Pond
- 14 Cabin
- 15 Stairs

CLASS 5 - Novice – White Markers – 350 m/m



- 1 Log
- 2 Planter
- 3 Log
- 4 Fan
- 5 Brush
- 6 Corner
- 7 Corner Coop In
- 8 Ditch
- 9 Log
- 10 Punches Town Drop
- 11 Red Coop
- 12 Table
- 13 Tree Skinny
- 14A Pond In
- 14B Pond Out
- 15 Red Coop
- 16 Up Bank
- 17 Brown Rolltop

Thank You Bronze & In-Kind Sponsors:



CLASS 6 - Training – Black Markers – 400 m/m



- 1 Red and Greer
- 2 Rolltop
- 3 Ditch
- 4 Coop Out
- 5 Corner
- 6 Triple Bar Out
- 7 Cabin
- 8A Sunken Road
- 8B Sunken Road
- 9 Gate
- 10 Skinny Log
- 11 Coop
- 12 Pond
- 13 Log
- 14A Hillside Log
- 14B Downbank
- 15 Up Bank
- 16 Cylinder
- 17 Brown Rolltop

THANK YOU ELK GROVE MILLING!

2025 CROSS-COUNTRY LIFETIME JUMP SPONSOR!



Ride times are posted separately. Visit: lonetreefarm.net

Please help support our wonderful sponsors who make these events possible!

Gary's Rent-A-Can

**21311 Bloss Avenue
Hillmar, CA**

209-667-2840

2025 Events Coming up at Lone Tree Farm

June 8th – Hunter Pace #2

June 21st-22nd – Cross Country with Connie Arthur

July 27th – Hunter Pace #3

September 12-14th (with 11th option) – Adult Camp

October 26th – Halloween High Point Hunter Pace

PLEASE ABIDE BY ALL LONE TREE FARM RULES

Everyone *MUST* sign a
LONE TREE FARM
RELEASE OF LIABILITY



NO Jumping without a trainer. NO horses near the river!

NO Dogs off leash! NO Campfires! DO not leave hoses under pressure

DO NOT park on the road or block the road or gates at any time

DO NOT allow your horse to drink from the farm's water troughs!

PLEASE Use own bucket for water/feed.

DO NOT tie your horse to fences, pipe pens or gates!